

2009 Utah Japanese Beetle Report

Clint Burfitt

Utah Department of Agriculture
and Food



Utah Department of
Agriculture and Food

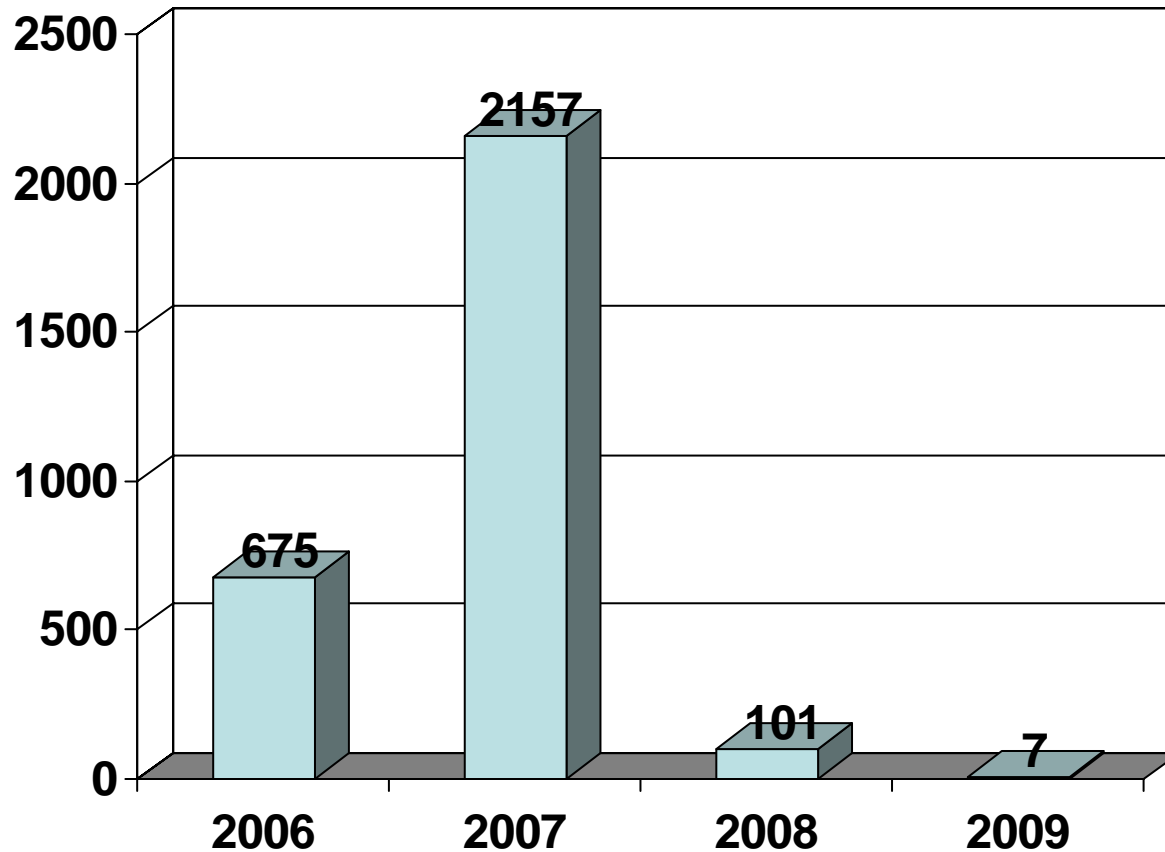
PLANT INDUSTRY



Presentation Outline

- Historical Report
 - Yearly Summary of Beetles Trapped
 - Yearly Summary of Total Traps
 - Yearly Summary of Acres Treated
- 2009 IDW and Treatment Map
- 2009 Trap Density Per Square Mile
- Action Plan 2010

Summary of Beetles Trapped



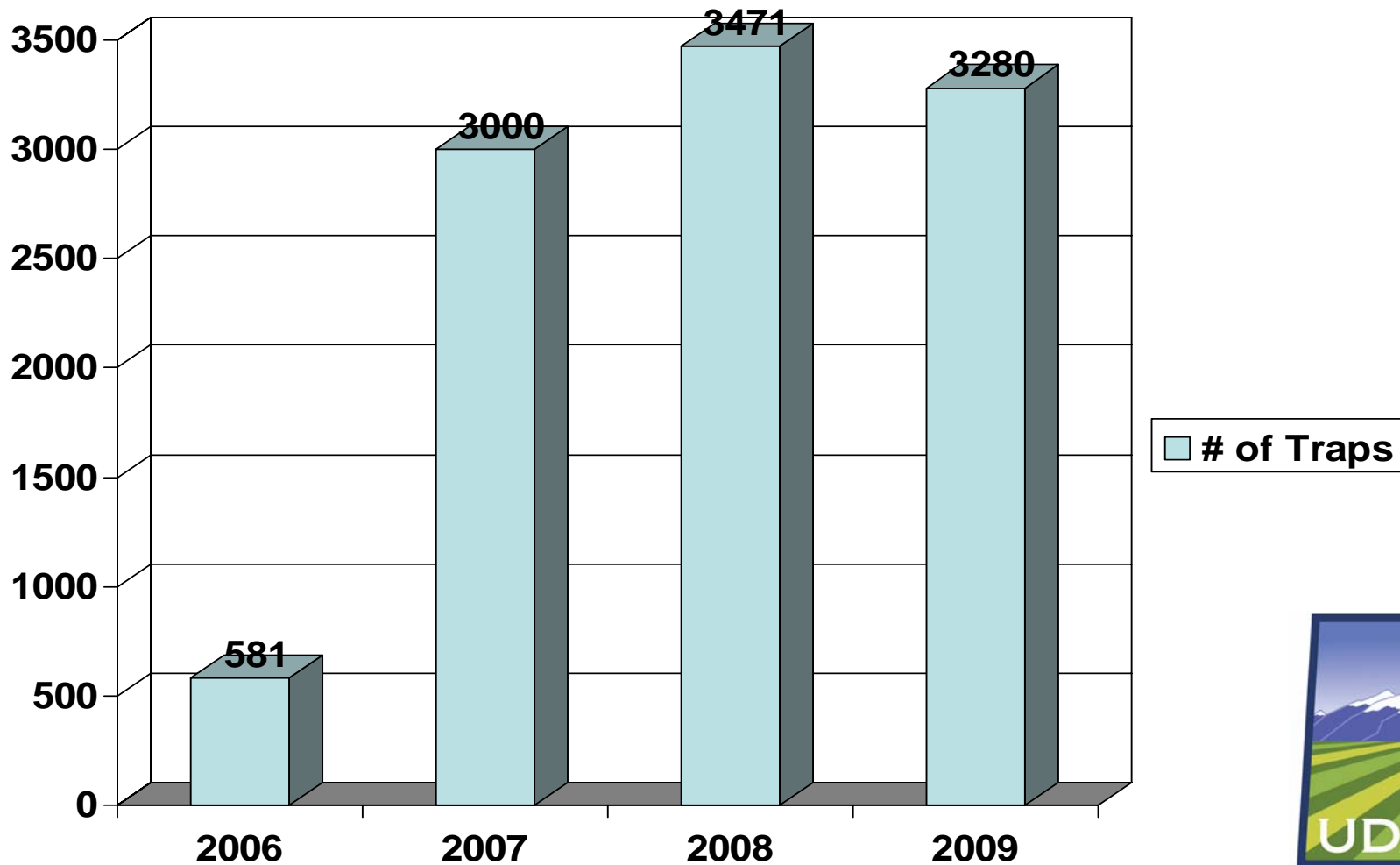
Trapped Beetles



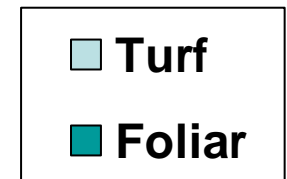
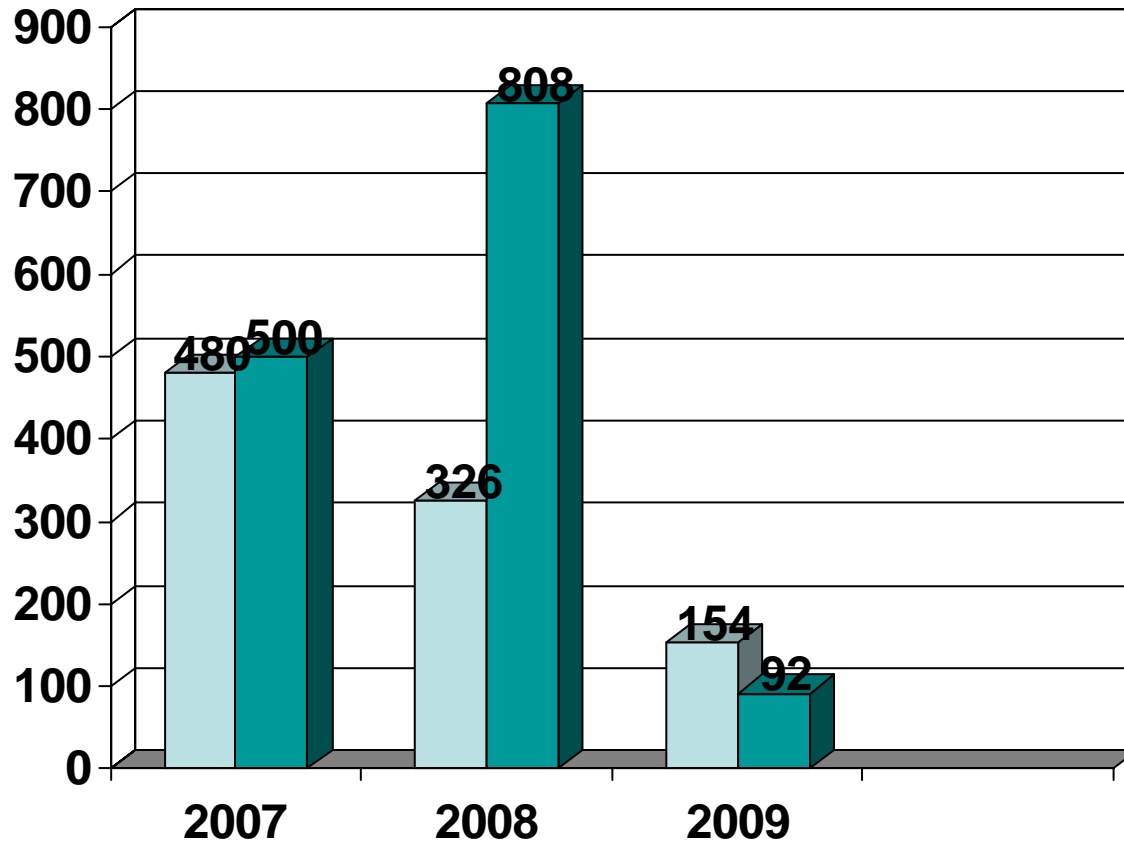
Utah Department of
Agriculture and Food

PLANT INDUSTRY

Total Traps Placed Statewide





Summary of Acres Treated




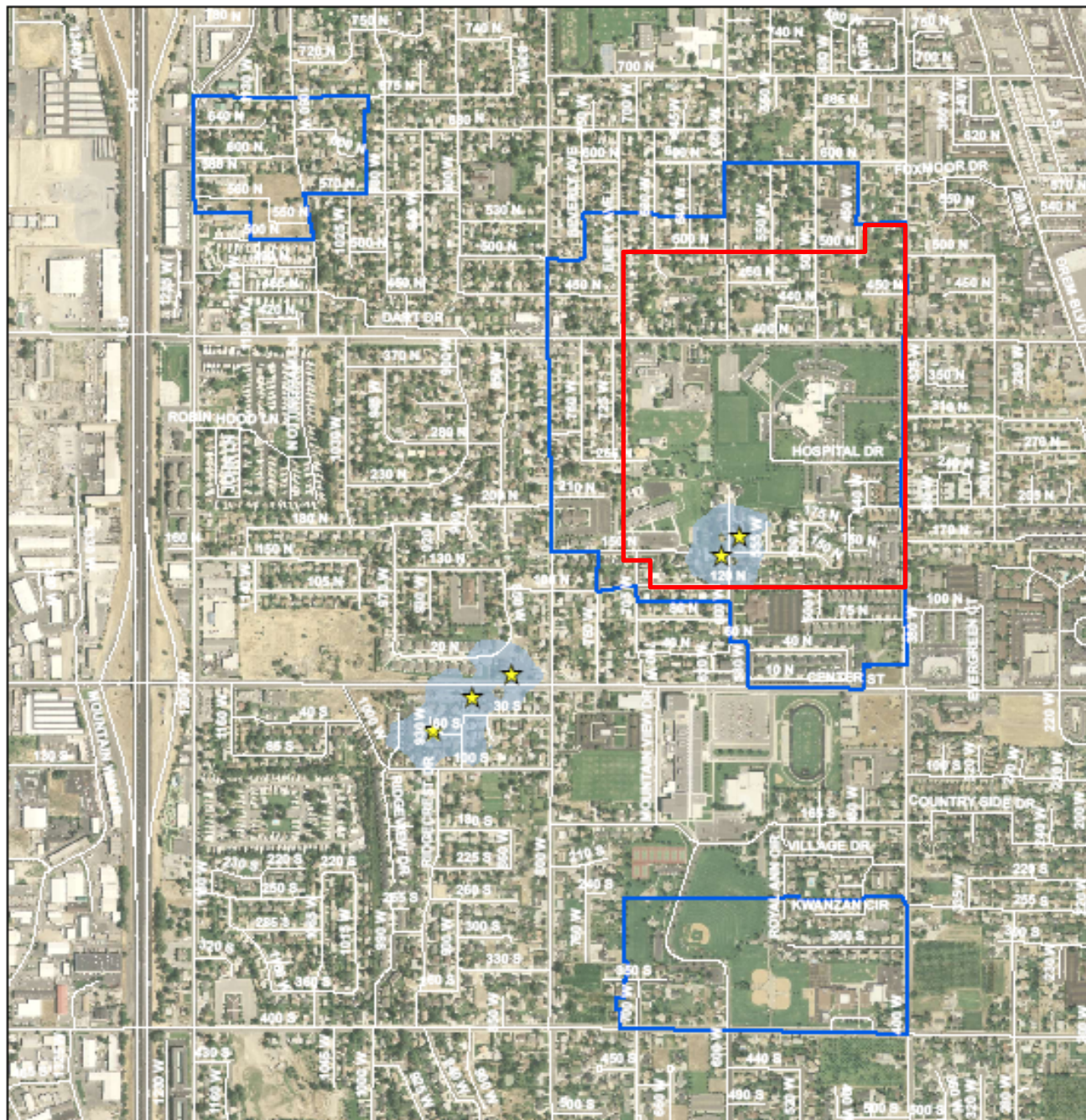
IDW Analysis of Orem Japanese Beetle Catches 2009

Predicted Number
of Catches Acres

 1 or fewer 20.7

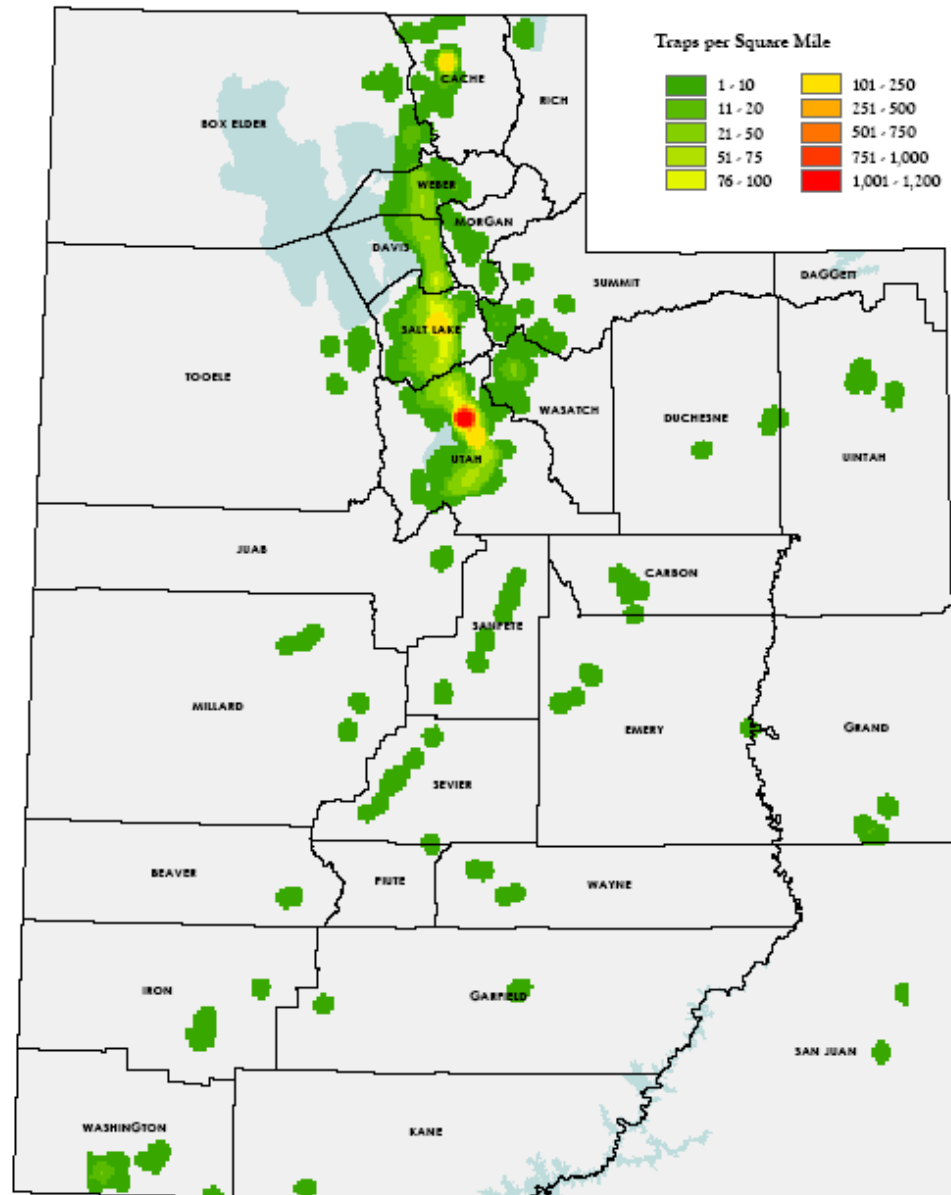
 Traps with 1 catch

 2009 Treatment
boundary (277 acres)



Map Scale 1:12,672
1 inch = 0.2 miles

2009 Utah Japanese Beetle Trap Density Per Square Mile



2010 Action Plan

- Treatment

- Turf - 100 Acres
- Foliar - TBD



- Trapping

- Orem Delimiting Grid
 - 5 JB ♂
 - 1,194 Traps
- SLC Delimiting Grid
 - 1 JB ♂
 - 110 Traps
- Hyde Park Delimiting Grid
 - 1 JB ♂
 - 50 Traps